

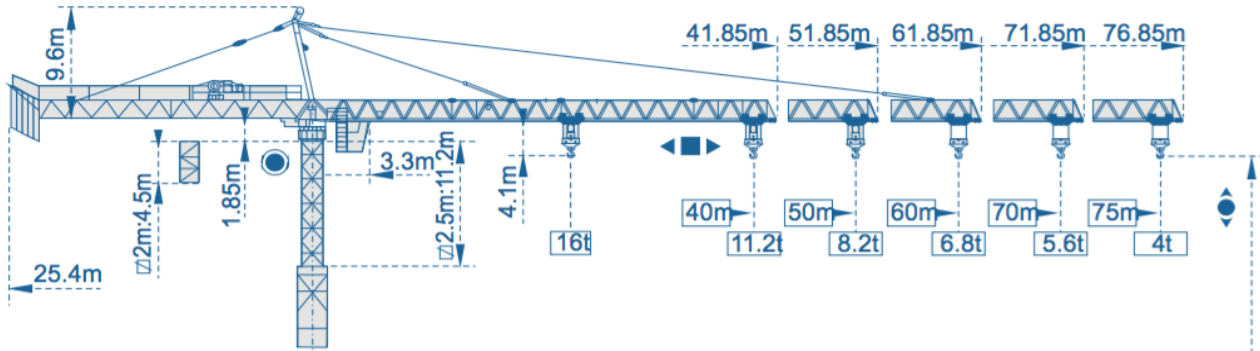


STT 7540-16

Experts in the field

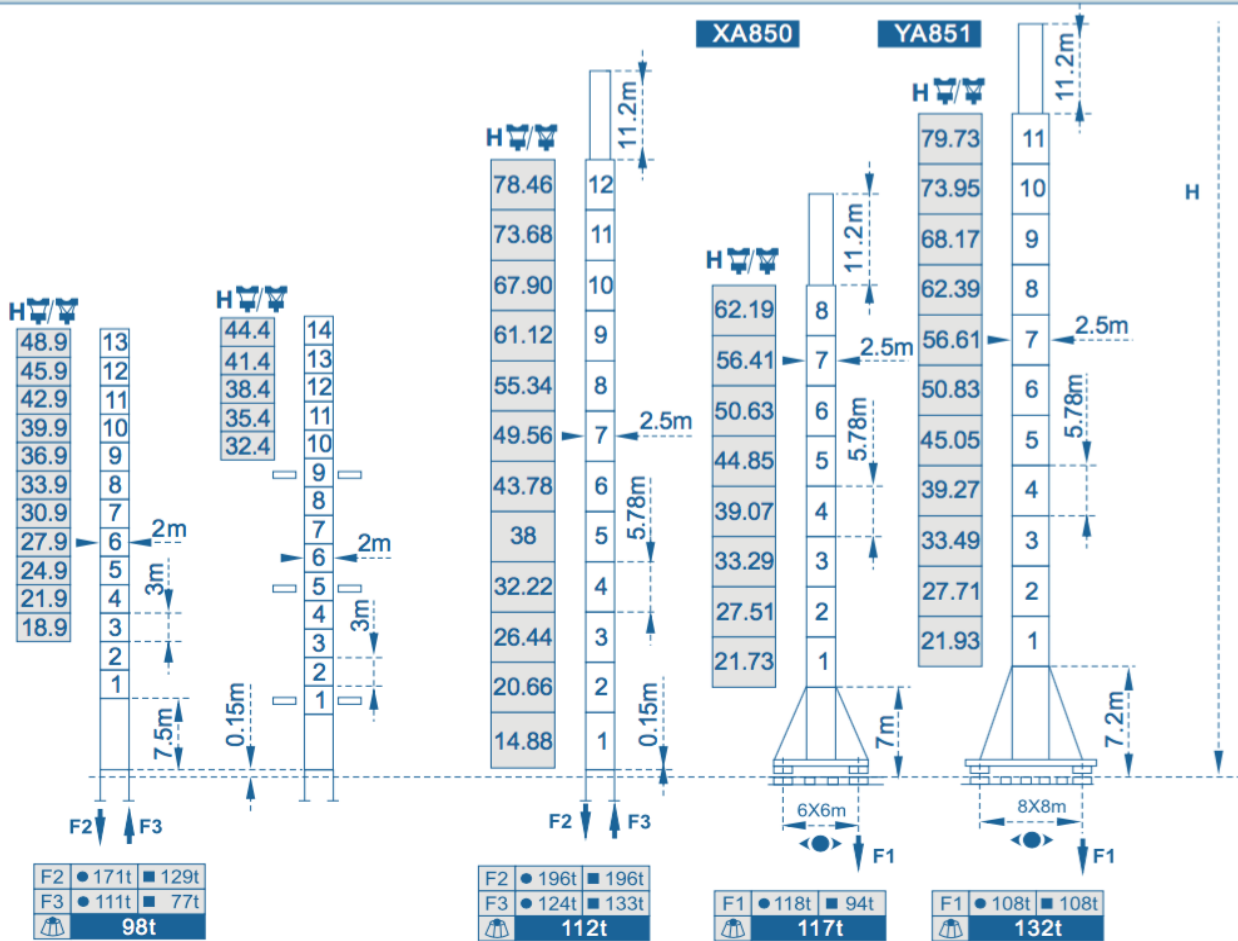


Outline Dimensions



Mast \square 2m x 2m

\square 2.5m x 2.5m



Load diagrams

Jib

75m 

3.3	→	24.2	27	30	33	37	40	42.8	44.2	47	50	53	57	60	63	67	70	73	75	m
16	14.1	12.4	11	9.6	9.8	8	8	7.4	6.8	6.4	5.8	5.42	5.1	4.6	4.4	4.1	4	t		

70m 

3.3	→	28.1	30	33	37	40	43	47	50	51	52.5	57	60	63	67	70	m
16	14.9	13.4	11.7	10.7	9.8	8.8	8.2	8	8	7.2	6.8	6.4	5.9	5.6	t		

60m 

3.3	→	28.1	30	33	37	40	43	47	50	51	52.5	57	60	m
16	14.9	13.4	11.7	10.7	9.8	8.8	8.2	8	8	7.2	6.8	t		

50m 

3.3	→	28.1	30	33	37	40	43	47	50	m
16	14.9	13.4	11.7	10.7	9.8	8.8	8.2	t		

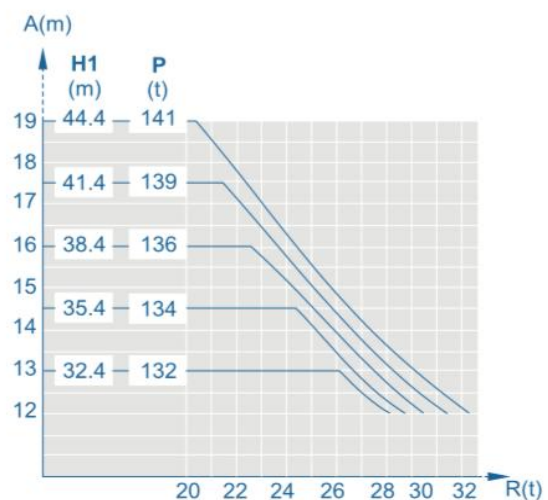
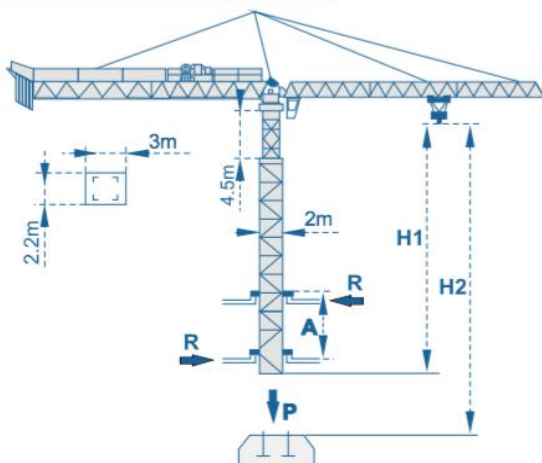
40m 

3.3	→	28.1	30	33	37	40	m
16	15.6	14	12.3	11.2	t		



Standard trolley 2/4 fall (when using  subtract 0.3t from the loads )

Inner climbing



	70RCS40	75LVF40R	102LVF40F	120LVF40F
H2	250m	125m	300m	150m
	350m	175m	295m	147m

Specifications Mechanisms						
Mechanisms	Motor type	Speeds m/min		Capacity t.	Rope lenght	Motor kW
Hoisting	70RCS40 ⬆️	2 fall	0-32	8	500m >500m ★	51.5
			0-64	4		
		4 fall	0-16	16		
			0-32	8		
	75LVF40R ⬆️	2 fall	0-30	8	600m >600m ★	55
			0-60	4		
		4 fall	0-15	16		
			0-30	8		
	102LVF40F ⬆️	2 fall	0-40	8	700m >700m ★	75
			0-80	4		
		4 fall	0-20	16		
			0-40	8		
120LVF40F ⬆️	2 fall	0-48	8	590m >590m ★	90	
		0-96	4			
	4 fall	0-24	16			
		0-48	8			
Trolleying	XD185K	◀■▶	15-30-60		185N.m	
	12DVF	◀■▶	0-60		185N.m	
	12DCV	◀■▶	0-60		185N.m	
Slewing	OMD85	⦿	0-0.7r/min		2X9	
	RCV185C	⦿	0-0.7r/min		2 x 185N.m	
	37RVF	⦿	0-0.7r/min		3 x 185N.m	
Travelling	RT643	◀●▶	16-32		6X2.6/5.2	
	42TVF	◀●▶	0-32		6X2.6/5.2	

★ To be supplied according to client's specific requirements

This commercial documents is not legally bindig.
For any technical information, please refer to
the corresponding instructions.

